



Ø38 mm PowerLine chain

The PowerLine chain is the answer to the market's increasing need for large transport capacity for both pellets and meal, as well as low maintenance costs.

Minimal wear and tear is secured through the combination of special steel and a hardening process allowing the individual links to adjust to each other.

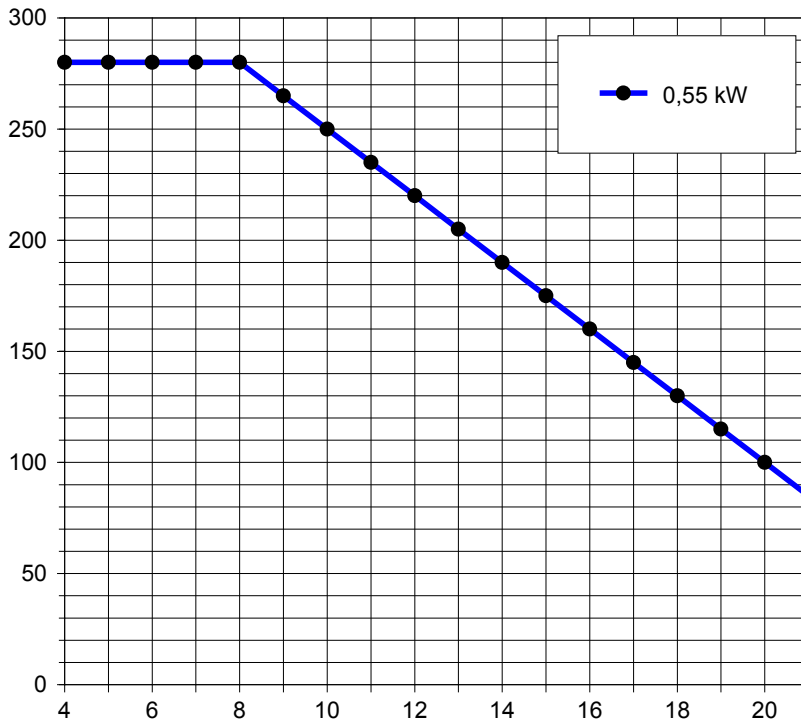
The PowerLine chain is easily assembled with a specially-hardened S-hook.

The PowerLine construction combines the high strength and durability of the traditional transport chain with the light and self-emptying construction of the conventional wire.

The construction of the PowerLine chain, featuring a single wire between the plastic discs, ensures efficient delivery at the individual feeding points.

Moulded-on, large-diameter plastic discs ensure feed transport without over-dosage.

Dimensioning chart

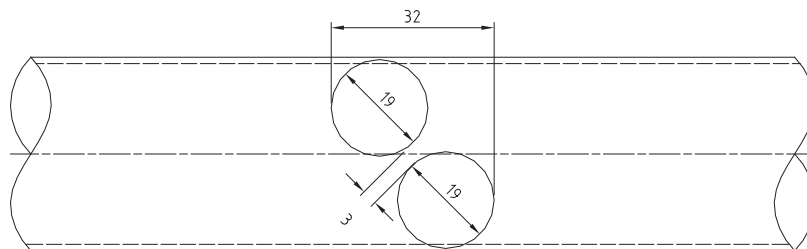


Each corner in the diagram corresponds to 15 metres.

Systems dimensioned on the basis of the diagram must satisfy the following conditions:

- use of $\varnothing 7$ mm connecting links.
- use of motor-driven uptake station.
- 2-off $\varnothing 19$ mm holes at all outlets (see the following description).

$\varnothing 38$ mm transport duct



Two holes are drilled at all outlets for optimum emptying. The hole positions should be staggered in relation to one another.